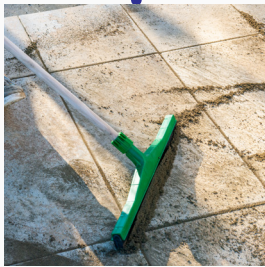


Foam Rubber
Squeegee

Broom/Brush

Fine Mist Hose /
Hand Sprayer

Sponge Float



DO use a fine mist spray of water to avoid dislodging product.

CAN be used on damp or wet paving, provided excess water is removed.

DO use the right equipment for the installation and cleaning process i.e. Soft foam rubber squeegee, Washboy with rollers and sponge float.

DO check weather forecast before installing. Cover paved area post installation if rain is forecast within 6 hours, to avoid the rain dislodging the mortar.

DO NOT install when raining.

Make sure joints are free of water and detritus before application.

Wet or damp excess tuffjoint can not be reused and should be disposed of.

Designed for external use, such as paths, patios and bound driveways.

The paving and joints can be jet washed after 14 days.

Consider the use of weiss Install Protect, which is a colourless protective coating applied to your paving unit before jointing. Allow to fully dry before applying tuffjoint.

www.steintec.co.uk/installprotect



**More Information
and Video Tutorials**

www.steintec.co.uk/tuffjoint

For more information:

www.steintec.co.uk/tuffjoint

Email: mail@steintec.co.uk

Web: www.steintec.co.uk

Phone: 0203 598 9800

Steintec®
high performance paving products



More Information
and Video Tutorials
www.steintec.co.uk/tuffjoint

Application Step 1

Step 2

Step 3

Step 4



Pour out tuffjoint on to the paving joints.

Ensure paving is dry or damp and No standing water in the joints.



Spread the mortar into the joints using diagonal swipes to avoid removing material from the joints.



Use a dustpan or similar to gather up remaining dry tuffjoint and return it to the tub for future use.

**Wet or damp excess tuffjoint can not be reused and should be disposed of.*



Using a fine mist spray, indirectly apply the water to the joints.

Continue to water until all of the joints are ponding.

Cleaning Step 1

Step 2

Step 3



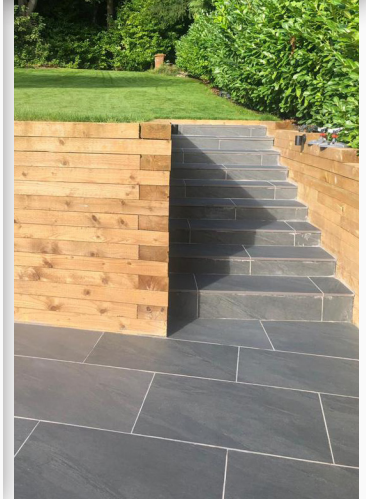
Remove excess water and remaining residue from the paving with a squeegee. Using diagonal swipes.



Half fill Washboy bucket with clean water'. Wash the sponge float in the water and use the rollers to squeeze out excess water. The sponge should be damp to use.



Use flat diagonal swipes across the paving to remove remaining tuffjoint from the surface. Clean the sponge float using the Washboy after each swipe.



Top Tips

tuffjoint is for use on Rigid / Bound Constructions.

Only use a soft foam rubber squeegee or a broom/brush to spread tuffjoint.

A hard rubber squeegee should NOT be used with any Steintec mortars.

Do NOT aggressively wash the fresh joints as the grout or pigments could be displaced.

Regularly change the water in the washboy bucket with clean water.

Diagonal swipes allow for the mortar to be applied and cleaned without pulling mortar back out of the joints.

For more information:

www.steintec.co.uk/tuffjoint

Email: mail@steintec.co.uk

Web: www.steintec.co.uk

Phone: 0203 598 9800