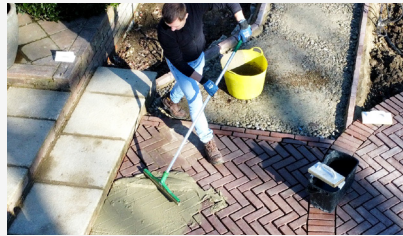


# Case Study

## Private Residence, Kent



A paved walkway in the rear garden at a private property in Kent used tufftop natural grey jointing mortar to finish and give the paving a strong and long-lasting life. tufftop was used over clay paviours produced by Vande Moortel at 215 x 50 x 70 mm.



To assist Abbey Garden Landscaping in their first time using tufftop jointing mortar, Darius, our Specification and Technical Manager went to the site to demonstrate how to use our tufftop jointing mortar best. He also went through any questions that were had by the landscaping team.

The site demonstration was done on a small project area, which included mixing tufftop to the correct consistency, spreading the mortar into the joints and finally cleaning the jointed area with a Washboy kit.

Steintec strive to ensure that your projects look great by producing high-performance mortars and offering on-site support for all of our products.



Technical datasheets, method statements and videos are available on the Steintec website; [www.steintec.co.uk/products](http://www.steintec.co.uk/products)

If you have any further questions please contact us on 0203 598 9800, where one of our skilled staff can either help you over the phone or arrange a site visit to carry out product training.



Images supplied by David Milloy, Abbey Garden Landscaping

### Project Details

Region	UK South East
Location	Private Residence, Kent
Project Size	80 m <sup>2</sup>
Client	Home Owner
Landscape Architect	Abbey Garden Landscaping
Contractor	Abbey Garden Landscaping
Date Completed	April 2024
Paving Elements	Vande Moortel Clay Paviors
Traffic Load	Foot traffic
Tools Hired	None

### Products Used



tufftop - natural grey jointing mortar

**Steintec**<sup>®</sup>  
high performance paving mortars

1 Northwick Rd  
Canvey Island  
Essex  
SS8 0PU  
**+44 203 598 9800**  
[www.steintec.co.uk](http://www.steintec.co.uk)