

# Case Study

## Residential, Wandsworth

### Bound Permeable Pavement



The bound permeable pedestrian surface for this development was designed using a highly attractive combination of natural stone paving slabs and cropped granite setts. Bands of cropped setts with 20mm bound permeable joints provide a rustic contrast to the precise cut and finish of the natural stone sawn slabs with 8mm joints.



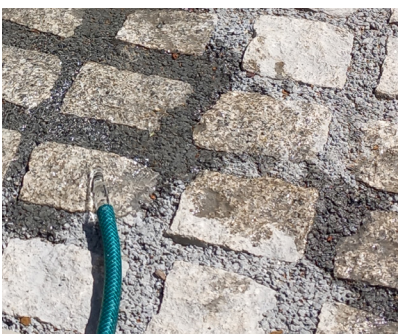
By making use of the latest techniques and materials, the development benefits from bound permeable natural stone surface which is low/no maintenance, very durable and with higher aesthetic appeal than would have been possible using an unbound, pre-cast concrete permeable block pavement typically laid in a herringbone pattern.

This project combines SuDS bound permeable paving with the most up-to-date methods of construction in BS 7533-101 and a variety of build-ups over varying substrates including structural concrete, permeable concrete, made-up ground and attenuation crates.



The Steintec tuffflow system of permeable bedding and jointing mortars was used to construct a SuDS permeable, bound/rigid pavement. The system allows the designer to capitalise on the low maintenance and high durability of a BS structurally compliant bound/rigid public realm pavement while avoiding the disadvantages of loose bedding and jointing aggregates used in conventional SuDS pavement construction.

The Steintec technical team provided assistance for the design of the pavement and structural build-up as well as aid with drainage calculations for the permeable paving surfaces and maintenance schedules.



### Project Details

Region	UK London
Location	Osiers Road, Wandsworth
Project Size	Medium
Landscape Architect	
Contractor	
Date Completed	August 2022
Paving Elements	Scoutmoor natural stone 400x600 slabs with 200x100 cropped granite setts
Traffic Load	Pedestrian
Tools Hired	Pergo 880, Washboy & Foam Rubber Squeegee

### Products Used



tuffbed 2-pack bedding mortar mixed with tuffgrit  
(1x tuffbed 2-pack : 4x tuffgrit)



tuffbond  
priming mortar



tuffflow - dark grey  
bound permeable  
jointing mortar

**Steintec**<sup>®</sup>  
high performance paving mortars

1 Northwick Rd  
Canvey Island  
Essex  
SS8 0PU  
**+44 203 598 9800**  
[www.steintec.co.uk](http://www.steintec.co.uk)