

**tuffbed<sup>®</sup>**  
2-pack

## tuffbed<sup>®</sup> 2-pack Permeable Bedding mortar

high performance with a  
low carbon footprint

- Fully water permeable and frost resistant
- Low carbon footprint (visit [www.steintec.co.uk](http://www.steintec.co.uk) for information on low carbon construction)
- 40 min working time (10°C)
- 30-70 mm bedding depth
- Helps prevent moisture related paving issues
- Fully complies with BS 7533 type A and type B
- Suited to commercial and public realm projects
- Compatible with all types of paving; granite, natural stone, concrete and porcelain units



| Technical Data             |  |
|----------------------------|--|
| Lowest working temp.       | ~ 2 - 30°C   |
| Bed depth                  | 30 - 70 mm   |
| Typical coverage           | 30 mm: 60 kg/m <sup>2</sup><br>40 mm: 80 kg/m <sup>2</sup><br>50 mm: 100 kg/m <sup>2</sup> |
| Working time               | ~ 30 min at 20°C<br>~ 40 min at 10°C   |
| Compressive strength (20°) | 14 days ~ 25 N/mm <sup>2</sup><br>28 days ~ 35 N/mm <sup>2</sup>                           |
| Flexural strength          | ~ 7 N/mm <sup>2</sup>  |
| Adhesion strength          | ~ 1.0 N/mm <sup>2</sup><br>~ 2.0 N/mm <sup>2</sup> (with tuffbond)                         |
| Shrinkage                  | < 0.1%   |
| Modulus of elasticity      | ca. 14,000 - 18,000 N/mm <sup>2</sup>  |

**tuffbed<sup>®</sup>**

## tuffbed<sup>®</sup> Pre-blended Bedding mortar

- Pre-blended bedding mortar
- Suitable for shallow bedding depth of 15-50 mm
- Helps prevent moisture related paving issues typically associated with conventional mortars
- Fully complies with BS 7533 type A and type B
- Suitable for heavily trafficked areas
- Compatible with all types of paving; granite, natural stone, concrete and porcelain units
- Suited to commercial and public realm projects



| Technical Data             |   |
|----------------------------|---|
| Lowest working temp.       | ~ 2 - 30°C  |
| Bed depth                  | 15 - 50 mm  |
| Typical coverage           | 15 mm: 27 kg/m <sup>2</sup><br>30 mm: 54 kg/m <sup>2</sup><br>50 mm: 90 kg/m <sup>2</sup> |
| Working time               | ~ 30 min at 20°C<br>~ 40 min at 10°C  |
| Compressive strength (20°) | 14 days ~ 25 N/mm <sup>2</sup><br>28 days ~ 35 N/mm <sup>2</sup>                          |
| Flexural strength          | ~ 7 N/mm <sup>2</sup>   |
| Adhesion strength          | ~ 1.0 N/mm <sup>2</sup><br>~ 2.0 N/mm <sup>2</sup> (with tuffbond)                        |
| Shrinkage                  | < 0.1%  |
| Modulus of elasticity      | ca. 14,000 - 18,000 N/mm <sup>2</sup>   |

**tuffbond<sup>®</sup>**

## tuffbond<sup>®</sup> Bonding and priming mortar

high performance adhesion bond

- Creates the essential adhesion bond between bedding and the paving element
- Applied to supporting concrete structures
- High resistance to shear forces and thermal stresses
- Polymer and resin free
- Provides full BS 7533 compliance in conjunction with tuffbed or tuffbed 2-Pack and tufftop jointing mortar



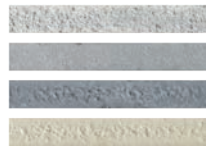
| Technical Data       |  |
|----------------------|--|
| Lowest working temp. | ~ 2 - 30°C                             |
| Consumption          | ~ 1.5 kg/m <sup>2</sup> per layer      |
| Working time         | ~ 30 min at 20°C<br>~ 40 min at 10°C   |
| Adhesion strength    | ~ 2.0 N/mm <sup>2</sup> (with tuffbed) |
| Typical water used   | ~ 6.75 L Wasser pro 25kg               |



tufftop®

## tufftop® High performance jointing mortar naturally free flowing grout

- Self compacting jointing slurry mortar
- Four colours available
- Exceeds requirements of BS 7533
- Compatible with all types of paving; granite, natural stone, concrete and porcelain units
- Extremely high durability & low maintenance
- Polymer and resin free
- Easy to clean



Four colours available



tuffset® G

## tuffset® G Specialist rapid mortar Multi-purpose paving mortar

- Ready for heavy traffic within 3 hours
- 30-70 mm bedding depth
- Multi-purpose: bedding, priming, jointing,
- emergency repairs & filling around gully and manhole frames in carriageways
- Available in three colours
- Free of chemical admixtures, polymers & resins
- Exceeds BS 7533 requirements for bedding, bonding and jointing.



Three colours available



This information is based on extensive tests and practical experience. It is not transferable to any specific application. We recommend that you test to check suitability. Technical changes in the course of further development reserved. Our general terms and conditions apply.  
© tuffbau Limited 2020. All rights reserved.

# Steintec®

high performance paving mortars



| Technical Data              |  |
|-----------------------------|--|
| Colours                     | Beige, Natural Grey, Mid Grey & Dark Grey                        |
| Joint width                 | >3 mm  |
| Lowest working temp.        | ~ 2 - 30°C   |
| Length of working time      | ~ 30 min at 20°C   |
| Compressive strength (20°C) | 14 days ~ 30 N/mm <sup>2</sup><br>28 days ~ 45 N/mm <sup>2</sup> |
| Flexural strength           | ~ 7.5 N/mm <sup>2</sup>  |
| Adhesive strength           | ~ 1.5 N/mm <sup>2</sup>  |
| Elastic modulus             | 20.000 ± 4.000 N/mm <sup>2</sup>                                 |
| Typical water used          | ~ 4 - 5 L Water per 25kg   |
| Shrinkage                   | < 0.1%   |

| Technical Data at 20°C (mixed with tuffgrit) |                         |                          |                                    |                                |   |
|--|-------------------------|--------------------------|------------------------------------|--------------------------------|---|
|  | tuffset G               | tuffset G + tuffgrit 1:1 | tuffset G + tuffgrit 1:2           | tuffset G + tuffgrit 1:3       | tuffset G + tuffgrit 1:4                |
|  | Narrow Joints           | Joint widths > 20 mm     | Quick High Strength Bedding Mortar | Quick Universal Bedding Mortar | Rapid Pedestrian Walkway Bedding Mortar |
| Compressive strength                         |                         |                          |                                    |                                |   |
| - 1 hour                                     | ~ 17 N/mm <sup>2</sup>  | ~ 17 N/mm <sup>2</sup>   | ~ 15 N/mm <sup>2</sup>             | ~ 13 N/mm <sup>2</sup>         | ~ 10 N/mm <sup>2</sup>                  |
| - 2 hours                                    | ~ 23 N/mm <sup>2</sup>  | ~ 23 N/mm <sup>2</sup>   | ~ 19 N/mm <sup>2</sup>             | ~ 15 N/mm <sup>2</sup>         | ~ 12 N/mm <sup>2</sup>                  |
| - 3 hours                                    | ~ 24 N/mm <sup>2</sup>  | ~ 24 N/mm <sup>2</sup>   | ~ 20 N/mm <sup>2</sup>             | ~ 17 N/mm <sup>2</sup>         | ~ 15 N/mm <sup>2</sup>                  |
| - 1 day                                      | ~ 40 N/mm <sup>2</sup>  | ~ 40 N/mm <sup>2</sup>   | ~ 30 N/mm <sup>2</sup>             | ~ 27 N/mm <sup>2</sup>         | ~ 20 N/mm <sup>2</sup>                  |
| - 28 days                                    | ~ 50 N/mm <sup>2</sup>  | ~ 50 N/mm <sup>2</sup>   | ~ 40 N/mm <sup>2</sup>             | ~ 35 N/mm <sup>2</sup>         | ~ 25 N/mm <sup>2</sup>                  |
| Flexural strength                            |                         |                          |                                    |                                |   |
| - 3 hours                                    | ~ 4 N/mm <sup>2</sup>   | ~ 4 N/mm <sup>2</sup>    | ~ 4 N/mm <sup>2</sup>              | ~ 3 N/mm <sup>2</sup>          | ~ 3 N/mm <sup>2</sup>                   |
| - 1 day                                      | ~ 7 N/mm <sup>2</sup>   | ~ 6 N/mm <sup>2</sup>    | ~ 6 N/mm <sup>2</sup>              | ~ 6 N/mm <sup>2</sup>          | ~ 5 N/mm <sup>2</sup>                   |
| Adhesion strength                            | ~ 3 N/mm <sup>2</sup> * | ~ 3 N/mm <sup>2</sup> *  | ~ 3 N/mm <sup>2</sup> *            | ~ 3 N/mm <sup>2</sup> *        | ~ 3 N/mm <sup>2</sup> *                 |
| Elastic modulus                              | ~ 23 kN/mm <sup>2</sup> | ~ 22 kN/mm <sup>2</sup>  | ~ 18 kN/mm <sup>2</sup>            | ~ 18 kN/mm <sup>2</sup>        | ~ 16 kN/mm <sup>2</sup>                 |
| Shrinkage                                    | < 0.1%                  | < 0.1%                   | < 0.1%                             | < 0.1%                         | < 0.1%                                  |

\* 3 N/mm<sup>2</sup> with tuffset G applied as bonding primer, ~ 1 N/mm<sup>2</sup> without

tuffbau Limited  
1 Northwick Road,  
Canvey Island,  
Essex,  
SS8 0PU

Phone: +44 203 598 9800

Email: [mail@steintec.co.uk](mailto:mail@steintec.co.uk)  
Web: [www.steintec.co.uk](http://www.steintec.co.uk)

Registered in England No. 4376958 - Registered Office: 1 Northwick Road, Canvey Island, Essex, UK, SS8 0PU