



## High Performance Paving Repair Mortar

### Preparing and Cleaning

Remove all loose material from joints, including old loose jointing and organic material.

Thoroughly clean the paving and joints, ideally with a pressure washer.

### Mixing

To prepare tufffix, add 1 litre of water into the tub, and empty 1 sachet of tufffix into the tub. Using a cordless drill with a spiral mixing paddle or twin paddle mixer, mix thoroughly to form a thick, smooth paste.

Do not mix more material than will be used within about 15 minutes at an ambient 20°C.

### Application

It is important the pavement is entirely wet, to aid application, the complete filling of the joints and the final cleaning process.

For any large loose paving pieces, paint the underside of the paving piece with tufffix using a stiff brush and re-place the paving piece.

Pour the mortar into the joints and cracks. Spread the excess mortar to remaining areas using a squeegee.

Use a sponge float or clean squeegee to wipe away the thin film of mortar remaining on the surface completely.

Do NOT let mortar dry on the surface, spray with a light mist to keep moist while applying and cleaning, if necessary.



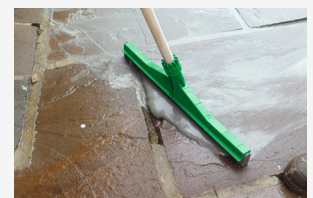
Remove organic material and loose jointing. Jet wash clean.



Add 1 L of water, then 1 sachet and mix.



Pour mortar onto wet paving



Spread mortar to fill joints and remove excess



Clean using a squeegee or sponge float