



## High Performance Paving Repair Mortar

tufffix can rejuvenate old paving, giving it a new lease of life, alleviating the need to fully lift and re-lay. For pedestrian only areas.

Old paving, often laid on sand/cement, which has cracked and broken joints and rocking pavers can be renovated with tufffix.

The thick flowable slurry mortar fills voids and replenishes joints to provide a structural repair.

Three simple steps to replenish damaged paving with tufffix;

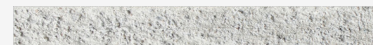
1. Remove all loose material from joints and thoroughly clean, ideally with a pressure washer.
2. Pour tufffix in to the joints.
3. Remove any excess using a sponge float.

Portions of the existing jointing mortar that are still sound and secure can be left in place and the tufffix applied over and around.

The longevity of a repair carried out with tufffix will depend on the condition and quality of the existing structure, how heavily it is used, and how well it is prepared.

### Technical Specs

Colour	Natural Grey
Packaging	Tub
Packaging weight	11 kg (2x 5.5 kg Sachets)
Joint width	>3 mm
Typical water used	1 L per 5.5 kg sachet
Packages per pallet	36
Pallet quantity	420 kg
Set time	3 hours
Working time	15 min at 20 °C
Working temperature	2-30 °C
Compressive strength (20 °C)	1 hr: ~27 N/mm <sup>2</sup> ; 24 hrs: ~50 N/mm <sup>2</sup>
Flexural strength	~7.5 N/mm <sup>2</sup>
Elastic modulus	(20,000 ± 4,000) N/mm <sup>2</sup>
Storage life	12 months from manufacture date
Compliance	BS 7533



Natural Grey

N.B. colours are indicative only



**Steintec®**  
high performance paving mortars

1 Northwick Rd  
Canvey Island  
Essex  
SS8 0PU  
**+44 203 598 9800**  
www.steintec.co.uk