



**Steintec**<sup>®</sup>  
paving systems  
by **tuffbau**<sup>®</sup>

Steintec products have paved the way for the transformation of some of the UK's most prestigious shopping malls.

The latest was at Oxford Westgate, which sits at the heart of the world renowned university city. The landmark Centre re-opened its doors to the public at the end of October 2017 after a major, nine month facelift delivered by contractors Vetter

Location: Westgate Shopping Centre, Oxford	
Elements:	Granite Slabs & Setts
Products Used:	Tuffbed 2 Pack, Tuffbond, Tuffgrit, Tufftop (Dark & Mid Grey)
Size:	6,000 m <sup>2</sup>
Client:	Landsec / The Crown Estates
Traffic Loading:	Pedestrian
Main Contractor:	Vetter Construction / Laing O'Rourke



Steintec supplied mixers and grout cleaning machines free of charge, delivering on site technical advice and practical support through a dedicated project team.

Construction, part of Laing O'Rourke, for its client Landsec / The Crown Estates.

Oxford Westgate delivers 800,000 square feet of retail and leisure facilities.

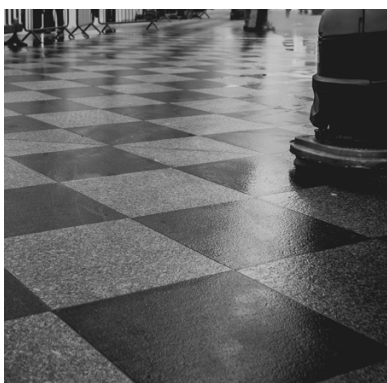
The Centre will transform the shopping experience for some 200,000 residents 30,000 students and 9.5 million tourists that visit annually, while complementing the City's outstanding architectural heritage. The open air nature of the design is environmentally friendly, reducing emissions by

eliminating the need for heating or air conditioning.

The development includes more than 6,000 square metres of indoor streets and walkways over three storeys which were paved with granite slabs and setts using the full-range of tuffbau products: **tuffbed**; **tufftop** and **tuffbond**. This included two colours of jointing mortar for aesthetics - dark and mid grey.

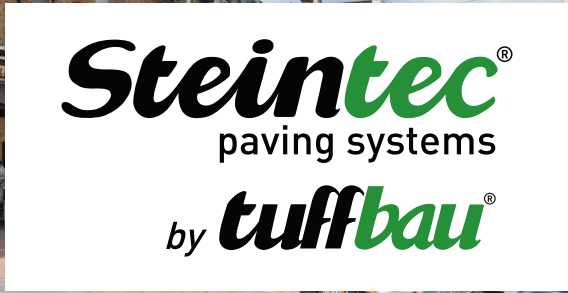
This was the UK's largest indoor project of its kind and demonstrated the effectiveness of using forced action mixers rather than silos for a job of this scale where large areas of paving have to be completed quickly and efficiently.

On time deliveries were critical to the success of the project as there was limited space on site for large consignments of construction materials and access in the middle of a busy city was difficult.



To find out more about our products and projects visit our website [www.steintec.co.uk](http://www.steintec.co.uk) Our special mortar calculator will tell you exactly how much product you need and we can provide specialist machinery and technical assistance on site to make sure your project runs smoothly.

For technical enquiries or to find out about our CPDs for architects, specifiers and other construction professionals, call us now on **+44 (0)203 598 9800**



Supported by the success of paving on the Oxford Westgate project, Vetter has made a decision to use Steintec products for its next retail project at St James in Edinburgh, which started in October 2017.

Along with Oxford Westgate, the tuffbau range was used by contractors McDermotts to set paving at the out of town shopping centre at Bicester



Bicester Village extension



St James - in progress (Jan '18)



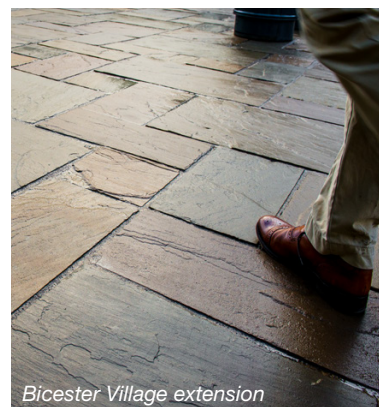
St James - artist impression



Bicester Village extension

Village, also in Oxfordshire. The designer outlet destination was being extended to cater for increased visitors.

A number of retail areas were also paved using tuffbau as part of the Hull City of Culture 2017 transformation. Eurovia contractors there took advantage of the early trafficking properties of **tuffset G** to pave the doorways of shops and cafés overnight, allowing them to open next morning with minimal disruption.



Bicester Village extension



Ealing Broadway

And in Ealing, as well as using tuffbau mortars for paving, the local council took advantage of Steintec's unique **Weiss** paving protection and cleaning regime.

The Steintec system is being specified for a number of town centre regeneration projects, including Wokingham, where work began in January 2018.

To find out more about our products and projects visit our website [www.steintec.co.uk](http://www.steintec.co.uk) Our special mortar calculator will tell you exactly how much product you need and we can provide specialist machinery and technical assistance on site to make sure your project runs smoothly.

For technical enquiries or to find out about our CPDs for architects, specifiers and other construction professionals, call us now on **+44 (0)203 598 9800**